

JOHNSON COUNTY HEALTH DEPARTMENT

2 0 0 6 A n n u a l R e p o r t

Our Vision
Health at the Highest Level

Our Mission
Prevention of Disease and
Promotion of Wellness for our
Community



Public Health
Prevent. Promote. Protect.

Why is Public Health Important?

Public Health is an organized community effort that targets **Prevention, Promotion and Protection** for the population as a whole. Public health efforts include a wide range of services that are all encompassing yet invisible in our daily lives.

There are more than 3,000 state, county and local health departments that serve the public every day by **PREVENTING** diseases and injuries, **PROMOTING** healthy behaviors, and **PROTECTING** against environmental hazards and emerging health issues.

It is estimated that there is in excess of half a million people in the United States public health workforce, representing a wide range of professions including nurses, educators, physicians, epidemiologists, dieticians, social workers, laboratorians, environmentalists, inspectors, technicians and statisticians.

In Johnson County, your public health department works diligently to:

–**Prevent** disease through immunizations, prenatal care, well child exams, prevent injury through car seat check-ups and bike helmet programs.

–**Promote** health through education, wellness screenings/testing, assessments, treatment, outreach and community partnerships.

–**Protect** residents through policy development, disease surveillance, monitoring, adult/day care inspections, investigations, and disaster readiness.

Because Healthy People, Day by Day, Build a Strong Johnson County Community.

Health Department Administrators

Leon F. Vinci, DHA, Director of Public Health

Joseph W. Hume, M.D., Medical Advisor & Health Officer

Division Directors

Barbara Riley, Family Health Services

Nancy Tausz, Disease Containment

Eldonna Chesnut, Adult and Child Care Facilities

Barbara D. Mitchell, Health Education

Jose Martinez, Administrative Operations

Board of County Commissioners, Board of Health

Annabeth Surbaugh, Chairman

C. Edward Peterson, District 1

John P. Segale, District 2

David A. Lindstrom, District 3

Dolores Furtado, District 4

Douglas E. Wood, District 5

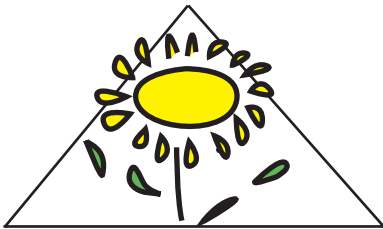
John M. Toplikar, District 6

County Management

Michael B. Press, County Manager

Hannes Zacharias, Deputy County Manager

Bernice Duletski, Assistant County Manager



JOHNSON COUNTY HEALTH DEPARTMENT

*11875 S. Sunset, Suite 300
Olathe, KS 66061*

Division: Adult and Child Care Facilities

Eldonna Chesnut, R.N., B.S.N., M.S.N., Division Director
Fellow, Kansas Public Health Leadership Institute

Adult Care Facilities Program

Monitors nursing homes, assisted living centers, adult day cares and Home Plus (home-based adult care) in accordance with State regulations, ensuring quality care and a safe, healthy living environment. Monitoring visits are made at least four times a year, plus assists with an annual state survey. Provides education and consultation to families, facility staff and the community. Available to the public as a resource on state regulations and complaints as requested.

Child Care Facilities Program

Provides health and safety information and education to child care providers and parents. Monitors licensed child care facilities with evaluation visits and initial, annual and compliance checks. Recommends facility licensure to KDHE. Investigates complaints on licensed and registered homes and child care centers. Works to resolve illegal care issues with the District Attorney's Office.

	2004	2005	2006
Initial Survey Visits	1,034	916	872
All Other Visits	1,196	1,561	1,438
Illegal Care Visits	126	102	70
Total Facility Visits	2,356	2,579	2,380

2004

2005

2006

Adult Care Visits 109 474 400

Significant Happenings

Offered seven new classes for adult care facilities.

Began planning "Elder Smiles" program - onsite dental care for elders in the adult care facilities in our county.

Average census for residents residing in Johnson County adult care facilities was 2,870.

Significant Happenings

Presented 54 workshops for Johnson County childcare providers, with 1,308 total attendees.

Participated in Kansas Reads to Preschoolers in conjunction with Johnson County Libraries.

Reported seven cases of elevated blood lead levels through the child care home lead inspection and testing program.

Average number of children in out-of-home care was 21,901.

Division: Health Education

Barbara D. Mitchell, M.S.W., Division Director
Fellow, Kansas Public Health Leadership Institute

Promotes healthy behaviors and prevention of disease and injury by distributing information and providing programs, events, screenings, presentations, classes, workshops and professional trainings to all segments of the population. Leads efforts of Community Health Assessment Process (CHAP).

	2004	2005	2006
Individuals Served	41,470	36,527	39,704
Wellness Screening Participants	2,457	2,804	2,712
Classes/Presentations Participants	19,603	16,649	18,029

Significant Happenings

Partnered with local/state/county organizations, senior centers, schools, community and work sites to offer research-based health education.

Provided technical support and assistance to the six Johnson County cities that passed or implemented comprehensive smoking restrictions.

Offered free HIV testing on National HIV Testing Day.

Coordinated child passenger safety workshops for foster parents and children.

Collaborated with Johnson County Parks and Recreation to offer "Let's Get Growing" classes.

Division: Administrative Operations

Jose Martinez, M.A., Division Director

Coordinates fiscal monitoring, grant coordination, budgeting, auditing, reporting, accounting, statistics, billing, computer operations, human resources, payroll and clerical tasks. Supports Health Department Divisions by scheduling appointments and follow-ups, medical chart preparation and auditing, data entry and secretarial functions.

Significant Happenings

Received funding to upgrade the Patient Data Software QS-AS400 to the Insight system, to be implemented in 2007.

Began planning and coordinating renovation of vacated space with the Facilities Department.

2004

2005

2006

County Funds	\$3,732,724	\$3,836,064	\$4,114,384
Grant Funds	\$2,318,884	\$2,950,000	\$2,663,505
Fees Collected	\$1,122,308	\$1,127,754	\$1,188,176
Total	\$7,173,916	\$7,913,818	\$7,966,065

Division: Family Health Services

Barbara Riley, R.N., B.A., Division Director

The Prenatal Program

Debra Whiteman R.N., B.S.N., Manager

The Johnson County Health Department provides prenatal services in order to foster healthy growth and development during pregnancy and to promote a safe delivery for mother and baby.

Significant Happenings

Collaborated with University of Kansas Medical Center to present childbirth classes.

Initiated restructuring of prenatal clinic schedule to allow clients to receive prenatal care within 3.7 weeks.

Achieved a low birth rate of 4% as compared to the national goals of 7.6% (Healthy People 2010).

Received a tobacco cessation grant to provide prenatal clients resources through the Kansas QuitLine.

Re-evaluated the prenatal high-risk clinic to accommodate an increased number of visits for prenatal clients with gestational diabetes.

	2004	2005	2006
Maternal & Infant Program			
Mothers Enrolled	858	949	1,036
Infants Enrolled	577	651	763
New Prenatal Clients	567	561	596
Visits	4,714	5,730	6,721
Deliveries	414	416	521
High Risk Clinic		105	101

Women's/Men's Health/Family Planning/STD/HIV Program

Debra Whiteman R.N., B.S.N., Manager

Provides reproductive health care services including physical exams, contraception counseling, sexually transmitted disease testing and treatment, HIV counseling, testing and referral.

Significant Happenings

Collaborated with Cancer Institute Center for Breast Cancer to provide two mobile mammogram clinics.

Updated the Family Planning protocol/procedure manual for generic medications.

Initiated LEEP (Loop Electrical Excision Procedure) for high-risk, uninsured clients.

ARNP completed training to become a certified colposcopist.

	2004	2005	2006
Number of Clinics	959	936	1,090
Clients	5,877	6,791	6,576
Visits	11,286	11,669	11,988
Colposcopy Clinic Clients	111	209	201

Laboratory Services

Denise Stoll, M.T., Manager

H. William Barkman, M.D., Laboratory Medical Director

Lowell Tilzer, M.D., Laboratory Clinical Consultant

Provides waived, moderate and high complexity testing in CLIA approved laboratory for all Family Health Services clinics.

	2004	2005	2006
In-house Tests	30,041	31,601	31,642
Send-out Tests	18,515	20,097	20,172
Total	48,556	51,698	51,814

Significant Happenings

Initiated KDHE's Lab X system for quicker reporting of results.

Performed 222 DNA blood draws for Johnson County Community Corrections.

Social Work Prenatal Services

Lisa Erlinger-Teel, L.M.S.W., Manager

Assesses prenatal client's social needs, provides referrals to community resources and determines financial status/eligibility for additional State/Federal programs. Provides ongoing support and counseling to clients throughout their pregnancy. Provides HIV/AIDS case management through Ryan White Grant.

	2004	2005	2006
Client Contacts	1,578	1,567	1,710
Ryan White Clients	84	84	70

Significant Happenings

Assisted with making registration appointments for clients with complex medical and/or social needs.

Continued to provide services to clients in the Prenatal High Risk clinic.

Well Child/Health Assessment Program

Debra Whiteman, R.N., B.S.N., Manager

Provides physical exams and health screenings to infants, children and adolescents through clinics staffed by physician residents from KU Pediatric program and Health Department Advanced Registered Nurse Practitioners.

Significant Happenings

Provided health assessment clinics to Heartland Learning Center Head Start.
Worked with community physicians to provide school and Kan Be Healthy Assessments.
Continued weekly clinics for clients from Adolescent Center for Treatment.
Offered "Reach Out and Read Kansas City" to encourage children to read by providing free, age-appropriate books and information to increase literacy.
Provided lead testing to 381 children; two elevated levels.

	2004	2005	2006
Clinics	154	139	156
Clients	966	986	893
Visits	1,152	1,122	1,106
Kan Be Health Assessments	438	247	331

Supplemental Food & Nutrition Program for Women, Infants and Children (WIC)

Laura Drake, R.D.,L.D., Manager

Prevents or corrects nutrition related problems by providing nutrition education, checks to buy nutritious food and health screenings for pregnant, postpartum and breastfeeding women and infants and children under 5. Services given to clients at or below 185% of poverty level.

Significant Happenings

Exceeded assigned state caseload of 5,383 by 125%.
Awarded WIC contracts to two additional grocery stores, totaling 37 grocery stores that redeem WIC checks.
Breastfeeding Peer Counselor Program were renewed for the following year.

	2004	2005	2006
New Clients	4,085	3,458	3,559
Previous Enrolled Clients	4,462	5,813	6,169
Total Clients	8,547	9,271	9,728
Certification Visits	9,373	10,459	11,527
Check Pick-up Visits	21,089	24,953	27,524
Total Visits	30,462	35,412	39,051
Nutrition Education Contacts	8,982	11,195	9,244
\$ Value of Checks Issued	\$4,305,046	\$5,530,386	\$6,556,753
\$ Value of Average Food	\$71.77	\$83.69	\$89.12

Division: Disease Containment

Nancy Tausz, R.N., B.S.N., Division Director

Disease Containment Program

Ida Nesmith, B.S.N., M.S., Manager

Prevents, contains and controls the transmission of disease, including tuberculosis, through surveillance, investigation and education. Collaborates with the Public Health Emergency Program in active surveillance for unusual syndromic events.

	2004	2005	2006
Number of Clients	6,351	6,268	6,362
TB Cases Reported	7	11	6
Refugee Health Assessments	35	43	35

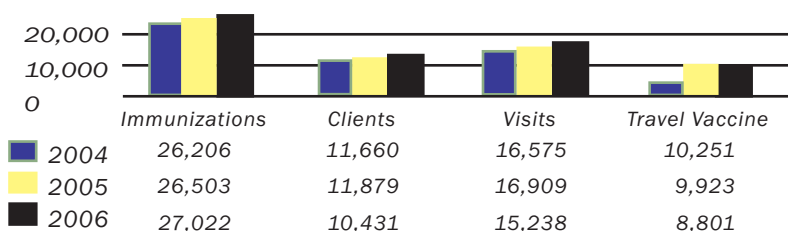
Significant Happenings

Investigated 28 disease outbreaks: 12 foodborne illness, 8 TB contact investigations.
Investigated 400 animal bites, up from 264 in 2005.
Experienced a resurgence in the vaccine-preventable diseases - measles, mumps, rubella, pertussis and varicella.

Immunization Program

Ida Nesmith, B.S.N., M.S., Manager

Provides immunizations to children and adults for vaccine-preventable diseases and offers international travel vaccines.



Significant Happenings

Collaborated with Rotary Club to provide two flu clinics.
Increased immunization compliance for two year olds to 87%.

Outreach Nurse Program

Cathy Shemwell, R.N., B.S.N., Manager

Outreach Nurse Program

Registered nurses provide screening, assessment, education and resource information/referral to persons of all ages living in Johnson County. The senior adult nurses focus on disease prevention, early identification of health problems, management of chronic illness and client education related to disease processes. The mother/newborn nurses promote the use of preventive health services and early identification of health problems during the prenatal and postpartum period.

Significant Happenings

Collaboration with the Kansas University Medical Center Research Institute on a statewide cardiovascular health study.

The Healthy Start Visitor program was discontinued due to a reduction of grant funding.

Outreach nurses continued to staff Immunization, Family Planning, STD, Well Child and Prenatal clinics providing care to 3,474 clients.

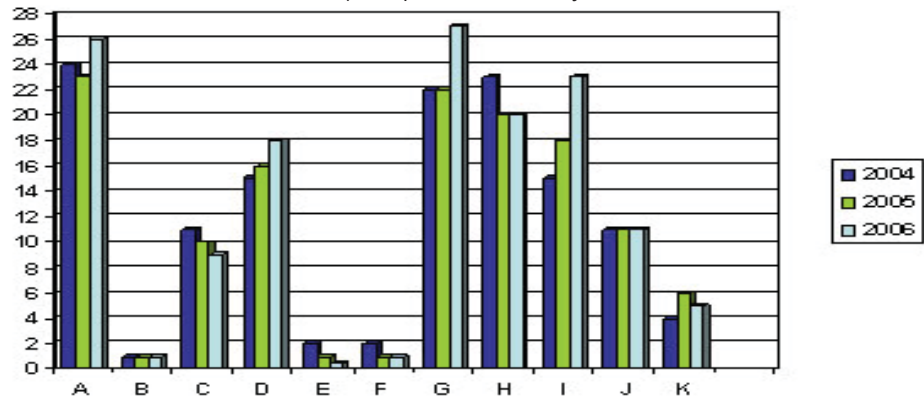
Outreach nurses assisted with the Employee Wellness influenza/tetanus vaccination clinics.

	2004	2005	2006
Blood Pressure Clinic Visits	4,848	4,680	3,890
Senior Adult Home Visits	686	604	602
Prenatal/Postpartum/ Newborn Home Visits	1,656	1,571	1,674
Healthy Start Home Visits	406	331	141
Presentation Participants	32	295	436
Total Outreach Visits	7,628	7,481	6,743

Prenatal/Postpartum Client Risk Factors Outreach Nurse Program

% of Prenatal/Postpartum Clients By Risk Factors

- A = High School or Less Education
- B = 17 Years of Age or Younger
- C = Unmarried or Single Parent (not residing with father of baby)
- D = Weight Loss During Pregnancy
- E = Unable to Meet Food/Shelter Needs
- F = Physical Abuse of Client
- G = Language/Cultural Barriers
- H = Inadequate or No Prenatal Care (> 13 weeks gestation)
- I = Urinary Protein or Glucose
- J = Infections
- K = Elevated Blood Pressure



Public Health Emergency Program (PHEP)

Liz Ticer, B.S., Manager

Ensures the health and safety of Johnson County residents and visitors in the event of a public health emergency (including bioterrorism) by continuing preparedness and response planning, assessing response capabilities, increasing epidemiologic capacity and surveillance activities, providing education and training to staff and other first responders, strengthening communication abilities within the County and enhancing the dissemination of important health information.

Preparedness Focus in 2007

The Public Health Emergency Program will continue to focus efforts on training health department staff, updating our response plans, and working with local, regional, metro and state partners in better preparing Johnson County for a public health emergency. Integration of new equipment and technology will also be a goal for 2007.

Significant Happenings

Continued collaboration with county agencies, businesses, regional partners, and local hospitals in emergency planning and response.

Conducted a full-scale mass dispensing exercise demonstrating our preparedness and response efforts with more than 30 county and community partners.

JCHD staff participated and attended more than 1,670 hours of emergency preparedness and response training during calendar year 2006.

More than 3,500 hours of direct and indirect staff time were dedicated to the creation and implementation of the KS-HEAT full-scale exercise of JCHD staff and more than 10 other departments agencies. Not included in that time was the more than 300 Olathe Northwest High School students, staff and Black & Veatch volunteers who participated as community recipients.