

# JOHNSON COUNTY HEALTH DEPARTMENT

## *annual report*

7  
0  
0  
2

Public Health's goal is to improve lives through the prevention of disease and the promotion of healthy behaviors. The public health approach can be applied to a handful of people or to the whole human population depending on the situation. The value of public health is evidenced in human terms.

Many diseases are preventable through the simplest of methods, for example - hand washing is one of the easiest and most effective ways to prevent contagious disease. More than two million Americans are alive that otherwise would have died from heart disease and stroke; nearly 100,000 people are alive as a result of seat belt use. Because of public health achievements such as vaccination programs, management of infectious diseases, tobacco control measures, and education and interventions to decrease chronic disease, there has been an increase of almost 30 years in life expectancy.

Public health encompasses a large array of functions that impact our lives everyday. By definition, public health aims to provide the maximum benefit for the largest number of people.

**Quite simply, the public health approach works!**

*our vision: health at the highest level*

*our mission: prevention of disease and promotion  
of wellness for our community*



## Dear Residents,

What a busy year!

As in past years, 2007 was one of several accomplishments. Some of the top events, amid many, include:

- Service to 122,834 clients
- First ever drive-through flu clinic, giving 500 doses in under two hours
- Design/ construction of additional office space at the Olathe site
- Opening of the Wellness Education Center
- A new Family Health Services Division Director
- Creation and release of the "Johnson County Overweight & Obesity Report" and the "Infant Mortality Report"

Among these achievements, activities and events that the year has brought, the most important factor to us, remains the commitment to our clients. The Health Department is dedicated to offering quality, comprehensive health promotion and disease prevention services designed to improve the health of the citizens of Johnson County.

This annual report lists our services and some of our successes of 2007. It is our goal to enhance the quality of the lives of people in Johnson County. We look forward to serving the community for many more years to come.

**Yours in Public Health,**

**Leon F. Vinci, DHA**

Johnson County Health Department Director



**Public Health**  
Prevent. Promote. Protect.

## Johnson County Board of Health/Board of County Commissioners

**Annabeth Surbaugh • Chairman**

**C. Edward Peterson • District 1**

**John P. Segale • District 2**

**David A. Lindstrom • District 3**

**Ed Eilert • District 4**

**Douglas E. Wood • District 5**

**John M. Toplikar • District 6**

## Johnson County Management

**Michael B. Press • County Manager**

**Hannes Zacharias • Deputy County Manager**

**Bernice Duletski • Assistant County Manager**

# FAMILY HEALTH SERVICES

Victoria Hanley, R.N., B.S.N., Division Director

## The Prenatal Program

Debra Whiteman R.N., B.S.N., Manager

The Johnson County Health Department provides prenatal services in order to foster healthy growth and development during pregnancy and to promote a safe delivery for mother and baby.

### Significant Happenings

Victoria Hanley, RN, BSN, joined the staff as Division Director in July 2007, returning to JCHD after four years in North Carolina.

Forty-seven (47) high risk prenatal clinic clients delivered healthy babies.

Achieved a low birth rate of 2% as compared to the national goals of 7.6% (Healthy People 2010).

Eighty-four percent (84%) of the clients served in the Prenatal Program were at or below 150% of federal poverty guidelines.

Continued to provide on-site language interpreting services to support increasing numbers of non-English speaking clients.

	2007	2006	2005
Maternal/Infant Program			
Moms Enrolled	1,035	1,036	949
Infants Enrolled	771	763	577
New Prenatal Clients	559	596	567
Visits	5,433	6,721	4,714
Deliveries	509	521	414
High-Risk Clinic	52	101	N/A

## Women's/Men's Health/Family Planning/STD/HIV Program

Debra Whiteman R.N., B.S.N., Manager

Provides reproductive health care services including physical exams, colposcopy treatment, contraception counseling, sexually transmitted disease testing and treatment, HIV counseling, testing and referral.

### Significant Happenings

Conducted two mobile mammogram clinics in collaboration with the Cancer Institute Center for Breast Cancer with 46 participants.

Initiated thin prep and HPV testing in February 2007.

Sixty-seven percent (67%) of the clients served in the Women's/Men's Health Programs were below 150% of federal poverty guidelines.

	2007	2006	2005
Number of Clinics	980	1,090	936
Clients	5,932	6,576	6,971
Visits	12,063	11,988	11,286
Colposcopy Clients	267	201	209

## Laboratory Services

Denise Stoll, M.T., Manager

H. William Barkman, M.D., Laboratory Medical Director

Lowell Tilzer, M.D., Laboratory Clinical Consultant

Provides waived, moderate and high complexity testing in CLIA approved laboratory for all Family Health Services clinics.

	2007	2006	2005
In-house tests	28,573	31,642	31,601
Send-out tests	18,668	20,172	20,097
Total	47,241	51,814	51,698

### Significant Happenings

Took over all entry of lab send-outs and lab results, and packing and shipping duties with the conversion to the Insight record keeping system.

Began blood collection for DNA testing at the New Century Adult Detention Center.

**KEEP CHILDREN ACTIVE.** Regular physical activity helps build and maintain healthy bones and muscles; helps reduce the risk of developing obesity and chronic diseases such as diabetes and cardiovascular disease; and reduces feelings of depression and anxiety and promotes psychological well-being. The United States Departments of Health and Human Services and Agriculture recommend that young people ages six to 19 engage in at least 60 minutes of physical activity on most days (if not every day) of the week.

Source: The Centers for Disease Control and Prevention

## Well Child/Health Assessment Program

Debra Whiteman, R.N., B.S.N., Clinical Coordinator

Provides physical exams and health screenings to infants, children and adolescents through clinics staffed by physicians from the KU Pediatric Resident program and Health Department Advanced Registered Nurse Practitioners.

### Significant Happenings

Seventy-six (76) percent of family incomes of Well Child clients were at or below 150% of the federal poverty guidelines.

Continued "Reach Out and Read Kansas City" to encourage children to read by providing free, age-appropriate books and information to increase literacy.

Initiated fluoride varnishing; a process where a high concentration of fluoride is painted directly on the teeth. This service provides added protection for children who are at high risk for dental decay.

	2007	2006	2005
Clinics	149	156	139
Clients	723	893	986
Visits	950	1,106	1,122
Kan Be Healthy Assessments	460	331	247

## Supplemental Food & Nutrition Program for Women, Infants and Children (WIC)

Laura Drake, R.D., L.D., Manager

Prevents or corrects nutrition related problems by providing nutrition education, checks to buy nutritious food and health screenings for pregnant, postpartum and breastfeeding women and infants and children under five. Services given to clients at or below 185% of poverty level.

### Significant Happenings

Exceeded assigned state caseload of 5,383 by 105%.

The Olathe WIC office moved into a newly renovated space.

The Breastfeeding Peer Counselor grant was renewed for continuation of the program.

	2007	2006	2005
New Clients	4,503	3,559	3,458
Previous Clients Enrolled	6,820	6,169	5,813
Total Clients	11,323	9,728	9,271
Certification Visits	13,348	11,527	10,459
Check Pick-Up Visits	29,679	27,524	24,923
Total Visits	43,027	39,051	35,412
Nutritional Education Contacts	18,744	9,244	11,195
Value of Checks Issued	\$6,646,199	\$6,556,753	\$5,530,386
Value of Average Food Voucher	\$78.58	\$89.12	\$83.69

## Social Work Services

Lisa Erlinger-Teel, L.M.S.W., Manager

Assesses prenatal client's social needs, provides referrals to community resources and determines financial status/eligibility for additional State/Federal programs.

Provides ongoing support and counseling to clients throughout their pregnancy. Provides HIV/AIDS case management through Ryan White Grant.

	2007	2006	2005
Client contacts	1,650	1,710	1,567
Ryan White Clients	74	70	84

### Significant Happenings

Continued ongoing mentorship of BSW students from University of Kansas School of Social Welfare.

Implemented a three-year Ryan White Quality Management plan to enhance case management services.

**BE SURE TO EAT YOUR FRUITS AND VEGETABLES!** The best way to give your body the balanced nutrition it needs is by eating a variety of nutrient-packed foods every day. A healthy eating plan is one that emphasizes fruits, vegetables, whole grains, and fat-free or low-fat milk and milk products, includes lean meats, poultry, fish, beans, eggs, and nuts and is low in saturated fats, trans fats, cholesterol, salt, and added sugar.

Source: U.S. Department of Health and Human Services

# DISEASE CONTAINMENT

*Nancy Tausz, R.N., B.S.N., Division Director,  
Fellow, Kansas Public Health Leadership Institute*

## Disease Containment Program

Cathy Shemwell, R.N., B.S.N., Manager

Prevents, contains, and controls the transmission of disease, including tuberculosis, through surveillance, investigation, and education. Collaborates with the Public Health Emergency Program in active surveillance for unusual syndromic events.

	2007	2006	2005
Number of Clients	7,041	6,362	6,268
TB Reports	8	6	11
Refugee Health Assessments	17	35	43

## Significant Happenings

Began utilization of the new Kansas reporting system (EDSS). Prior to implementation, the Health Department was a pilot test site and provided input to the system developers.

Investigated a Cryptosporidia (waterborne protozoan parasitic infection) outbreak involving a total of 44 individuals.

Investigated 448 animal bite exposures, up from 396 in 2006. 125 involved bats and five of those bats tested positive for rabies.

Developed an updated Rabies Resolution for the unincorporated areas of the county.

## Public Health Emergency Program (PHEP)

Liz Ticer, B.S., Manager

Ensures the health and safety of Johnson County residents and visitors in the event of a public health emergency (Large disease outbreak as well as bioterrorism) by continuing preparedness and response planning, assessing and supporting response capabilities, providing education and training to staff and other first responders, strengthening communication abilities within the County, and enhancing the dissemination of important health information.

## Significant Happenings

Expanded our collaboration with other county agencies and departments, local businesses and hospitals, and regional partners in public health emergency planning and response.

Conducted a mass dispensing exercise by way of a drive-thru flu clinic in which we provided 500 free flu shots. This was done with the support of the Public Health Emergency Program as well as other Health Department programs, including Immunizations and the Outreach Nursing staff. Community partners included Mission Police Department, Johnson County Sheriffs Office, and Johnson County Facilities.

Participated and conducted more than 980 training hours focusing on public health, emergency response, and the Incident Command System.

Spent more than 2,000 work hours developing, conducting and/or participating in local and regional exercises. Most were directly sponsored by the Public Health Emergency Program.

## Preparedness Focus in 2007

The Public Health Emergency Program will continue to focus efforts on training Health Department staff, updating our response plans, and exercising our response plans with local, regional, metro, and state partners in better preparing Johnson County for a public health emergency.

**BE SURE TO PLAN.** Have an emergency kit ready for any emergency. Some items to include in the kit: one gallon of water, per person, per day, for at least three days; canned meats, fruits, vegetables, and soups; and non-perishable food items like granola bars, peanut butter, and dried fruit. If you have an infant at home or pets, be sure to stock extra supplies for them. Have an extra supply of both prescription and non-prescription drugs on hand, if possible. Make sure to have extra batteries, a flashlight, battery-powered radio, first aid kit, extra money, credit card(s), and sturdy trash bags. Put all items into a container that you can easily carry.

## Outreach Nurse Program

Cathy Shemwell, R.N., B.S.N., Manager

### Outreach Nurse Program

Registered nurses provide screening, assessment, education, and resource information/referral to persons of all ages living in Johnson County. The senior adult nurses focus on disease prevention, early identification of health problems, management of chronic illness, and client education related to disease processes. The mother/newborn nurses promote the use of preventive health services and early identification of health problems during the prenatal and postpartum period.

#### Significant Happenings

Continued collaboration with the Kansas University Medical Center Research Institute on a statewide cardiovascular health study.

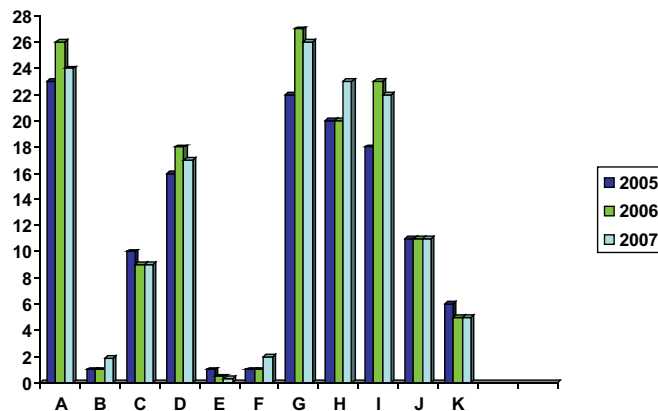
277 blood pressure screening clinics at various locations ensuring countywide access.

Outreach nurses continued to staff Immunization, Family Planning, STD, Well Child and Prenatal clinics providing care to 2,550 clients.

	2007	2006	2005
Blood Pressure Clinic Visits	3,302	3,890	4,680
Senior Adult Home Visits	801	602	604
Mom/Newborn Home Visits	1,656	1,674	1,571
Total Outreach Visits	5,780	6,166	6,855

### % of Prenatal/Postpartum Clients by Risk Factors

- A = High school or less education
- B = 17 years of age or younger
- C = Unmarried or single parent (not residing with father of baby)
- D = Weight loss during pregnancy
- E = Unable to meet food/shelter needs
- F = Physical abuse of client
- G = Language/cultural barriers
- H = Inadequate or no prenatal care (>13 weeks gestation)
- I = Urinary protein or glucose
- J = Infections
- K = Elevated blood pressure



## Immunization Program

Julie Beach, R.N., Manager

Provides immunizations and education to children and adults for vaccine-preventable diseases. Offers international travel vaccines and screening for Tuberculosis.

	2007	2006	2005
Immunizations	32,896	27,022	26,503
Clients	10,492	10,431	11,879
Visits	15,858	15,238	16,909
Travel Vaccine	7,705	8,801	9,923

#### Significant Happenings

Collaborated with the Johnson County Employee Wellness Committee to offer eight flu clinics; 815 vaccines were provided.

Collaborated with the Health Care Foundation of Greater Kansas City and Reach Foundation to offer HPV vaccine to females nine to 26 years of age.

**DISEASE PREVENTION IS KEY.** It is always better to prevent a disease than to treat it. Vaccines prevent disease in the people who receive them and protect those who come into contact with unvaccinated individuals. Vaccines help prevent infectious diseases and save lives. They are responsible for the control of many infectious diseases that were once common in our country, including polio, measles, diphtheria, whooping cough, rubella, mumps, and tetanus.

The most important thing to do to keep from getting sick is to wash hands, especially after coughing and sneezing, before preparing foods or eating, and after using the restroom. Wash for at least 20 seconds with soap and hot water.

Source: The Centers for Disease Control and Prevention

# ADULT & CHILD CARE FACILITIES

Eldonna Chesnut, R.N., B.S.N. M.S.N., Division Director  
Fellow, Kansas Public Health Leadership Institute

## Adult Care Facilities Program

Monitors nursing homes, assisted living centers, adult day cares and Home Plus (home-based adult care) in accordance with State regulations, ensuring quality care and a safe, healthy living environment. Monitoring visits are made at least four times a year, plus an annual state survey. Provides education and consultation to families, facility staff, and the community. Available to the public as a resource on state regulations.

	2007	2006	2005
Adult Care Visits	404*	400	474

\* 37 onsite classes taught to adult care facility staff in addition to monitoring visits

### Significant Happenings

Received grant from the Kansas Department on Aging to assist with providing on-site education programs to nursing home staff.

Grant received to start Elder Smiles program (onsite dental care) for elders in the adult care facilities in the county.

Participated in the Senior Smiles program.

## Child Care Facilities Program

Provides health and safety information and education to child care providers and parents. Monitors licensed child care facilities with evaluation visits and initial, annual, and compliance checks. Recommends facility licensure to KDHE. Investigates complaints on licensed and registered homes and child care centers. Works to resolve illegal care issues with the District Attorney's Office.

	2007	2006	2005
Initial Survey Visits	893	872	916
All Other Visits	1,315	1,438	1,561
Illegal Care Visits	68	70	102
Total Facility Visits	2,276	2,380	2,579

### Significant Happenings

Added a full-time childcare surveyor in November.

Presented 43 workshops for Johnson County child care providers, with 890 total attendees. Sponsored 16 classes taught by Community Partners for childcare providers.

Average number of children in out-of-home care for 2006 was 26,059.

# HEALTH EDUCATION

Barbara D. Mitchell, M.S.W., Division Director  
Fellow, Kansas Public Health Leadership Institute

Promotes healthy behaviors and prevention of disease and injury by distributing information and providing programs, events, screenings, presentations, classes, workshops, and professional trainings to all segments of the population. Leads efforts of Community Health Assessment Process (CHAP).

	2007	2006	2005
Individuals Served	39,825	39,704	36,527
Wellness Screening Participants	2,070	2,712	2,804
Classes/Presentations Participants	21,753	18,029	16,649

### Significant Happenings

SAFE KIDS Johnson County received the 2007 SAFE KIDS Local Coalition of the Year Award from SAFE KIDS Kansas.

Promoted smoke-free workplace ordinances that resulted in 85% of the Johnson County population being protected from secondhand smoke by January 2, 2008.

Sponsored and coordinated the "Quinceanera Program" that promotes positive family communication for Spanish-speaking families.

Designed, furnished and began health programming in the Wellness Education Center.

**WHAT IS HEALTH EDUCATION?** Health education is the development of individual, group, institutional, community, and systemic strategies to improve health knowledge, attitudes, skills, and behavior. The purpose of health education is to positively influence the health behavior of individuals and communities as well as the living and working conditions that influence their health.

Source: American Association for Health Education

# ADMINISTRATIVE OPERATIONS

*Jose Martinez, M.A., Division Director*

Coordinates fiscal monitoring, grant coordination, budgeting, auditing, reporting, accounting, statistics, billing, computer operations, human resources, payroll, and clerical tasks. Supports Health Department Divisions by scheduling appointments and follow-ups, medical chart preparation and auditing, data entry and secretarial functions.

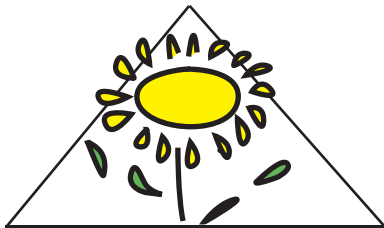
## Significant Happenings

Implemented INSIGHT, a Windows-based computer system that upgraded registration, appointment, and billing procedures.

Worked with the Facilities Dept. to expand the Olathe site to include additional space for WIC, Health Education, and the Public Health Emergency Program.

	2007	2006	2005
County Funds	\$4,703,315	\$4,114,384	\$3,836,064
Grant Funds	\$3,296,000	\$2,663,505	\$2,950,000
Fees Collected	\$1,258,507	\$1,188,176	\$1,127,754
Total	\$9,257,507	\$7,966,065	\$7,913,818

**PUBLIC HEALTH WORKS.** The field of public health is an organized effort of society to promote the population's health and well-being and reduce inequalities in health status; prevent disease, injury, disability, and premature death; and protect the public from environmental and other hazards to health.



**JOHNSON COUNTY  
HEALTH DEPARTMENT**

**11875 S. Sunset, Suite 300  
Olathe, KS 66061**